

MARCH 2026



THE SHEATH

NEWSLETTER OF THE PENINSULA ORCHID SOCIETY

PENINSULA ORCHID SOCIETY

PRESIDENT'S MESSAGE

SUSAN GUTIERREZ

Hello Everyone,

We had a great February meeting. Tom Mudge's presentation on growing Vandas outdoors in the bay area was excellent and entertaining! A big thank you to Tom for taking the time to speak to our group. We had 25 attendees that included one visitor and one new member. We also had very nice Opportunity Table plants provided by our member, Linda Locatelli.

I hope you had a chance to attend the San Francisco Pacific Orchid Exhibition. If not, you missed many fabulous orchid displays. Some of our members had displays with award winning plants: Jason Douglass and Ron Norris, Ken Jacobsen, Pierre Pujol and Dennis Olivas (D&D Orchids). In addition, the following members were among the plant trophy winners: Ken Jacobsen, Jason Douglass, Chaunie Langland, Dennis Olivas and Bill Weaver. Congratulations! For next year's POE, Chaunie is suggesting that POS enter a display. We have many members who grow beautiful orchids and we should show them off!

Upcoming shows in March:

The Santa Barbara International Orchid Show March 19-22, Earl Warren Showgrounds, Santa Barbara.

The Sonoma County Orchid Society Spring Show March 27-29, Santa Rosa Veterans Building, Santa Rosa.

And don't forget the Peninsula OS and Gold Coast Cymbidium Society joint show and sale April 18-19. We need your help to make it a success. You can sign up to help at:

<https://signup.com/go/QPkfBua>).

Our March meeting will feature Ron Parsons speaking about and showing fabulous photos of his recent trip to Australia.

I hope to see you on March 27.

Susan

MARCH SPEAKER

Ron Parsons has been growing orchids for more than 50 years, and has been interested in the species for most of that time. He loves to photograph orchids and other flowers whenever possible. Ron has more than 124,000 digital images, most of which are of orchids, and still retains a slide library that exceeds 100,000 botanical images. He has given more than 500 talks on various botanical topics, and has more than 7000 published photos. Ron has co-authored five books on botanical subjects, all with Mary E. Gerritsen. The first two, published by Timber Press, are *Masdevallias, Gems of the Orchid World* and *Calochortus, Mariposa Lilies and their Relatives*. Their third book, a two-volume set, *A Compendium of Miniature Orchid Species* was published by Redfern Natural History Productions in January 2014. In 2019 *The American Orchid Society Guide to Orchids and their Culture* was released, and is on its third printing. The fifth book, a much-revised second edition of *A Compendium of Miniature Orchids Species* was released in October, 2021. It is now a four volume set with 3100 photos (1800 are new), including those of more than 500 species not in the first edition.

This meeting, Ron will speak about and show fabulous photos of his recent trip to Australia.

Opportunity plants at this meeting will be provided by Jeff Tyler.



MEMBERSHIP RENEWAL

This is a friendly reminder that it's time for annual membership renewal!

Individual Membership: \$30.00

Family Membership (Entire Family at One Address): \$40.00

Individual Membership, Spouse of Life Member: \$15.00

You may pay by PayPal on our website, at <http://penorchidsoc.org/membership.html>.

If you have any questions, please contact us at penorchidsoc@yahoo.com.

UPCOMING EVENTS

March 19-22 - Santa Barbara International Orchid Show

At the Earl Warren Fair Grounds in Santa Barbara, CA. Purchase tickets at:
<https://www.sborchidshow.com/show-tickets>

March 27-29 - Sonoma County Orchid Society Spring Show

At the Santa Rosa Veterans Auditorium, Saturday from 10am to 5pm and Sunday from 10am to 4pm. Talks at 11:30 AM Saturday and Sunday, and 1:30 PM on Sunday.

April 17-29 - Sacramento Orchid Society 77th Annual Orchid Show

April 17 (preview night) from 6:30PM to 9:00PM, and Saturday April 18th from 10:00AM to 5:00PM and Sunday April 19th from 10:00AM to 4:00PM. At the Carmichael Elks Lodge #2103, 5631 Cypress Ave, Carmichael, CA 95608. For more information, please visit: <https://www.sacramentoorchids.org/new-events>

April 18-19 - Peninsula Orchid & Gold Coast Cymbidium Society Show and Sale

At the San Mateo Garden Center. There will be vendors, member sales, potting demonstrations, educational talks, AOS judging, and more! For more information, see the poster on the following page. Sign up to help at: <https://signup.com/go/QPkfBua>.




THE PENINSULA ORCHID SOCIETY &
GOLD COAST CYMBIDIUM SOCIETY
PRESENT

ORCHID SHOW & SALE

APRIL 18 (\$3 ADMISSION)
9 AM TO 4 PM

APRIL 19 (FREE)
10 AM TO 4 PM

**VENDORS,
MEMBER SALES,
EDUCATIONAL TALKS,
AOS JUDGING,
AND MORE!**

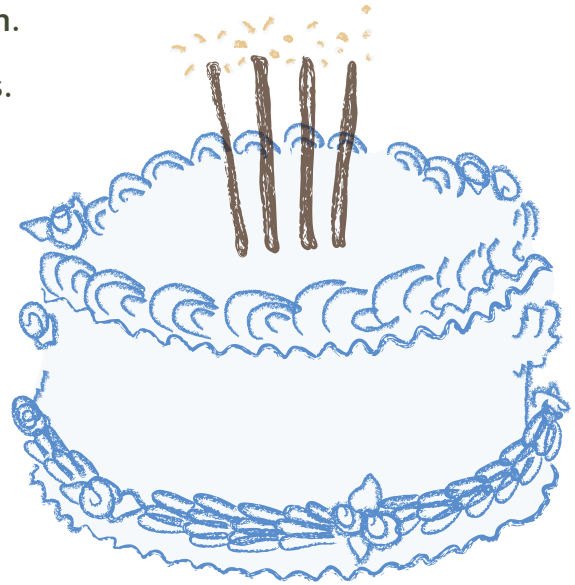


**SAN MATEO GARDEN CENTER
605 PARKSIDE WAY, SAN MATEO, CA**

MEMBER NEWS

If you would like your pictures to be in the next month's newsletter, send them to our email by the end of this month. Include the plant names and clear pictures.

Happy birthday to Clarice Hampel, C. Todd Kennedy, Roey Shaviv, Isis Trenchard, and Carol Zoltowski!



Meeting Agenda

6:30 PM - Garden Center doors open

7:00 PM - Zoom meeting opens

7:00 PM - Ron Parsons

8:00 PM - Announcements

8:10 PM - Show and Tell

Opportunity Table from Jeff Tyler

Reminder

Our general meetings are the fourth Friday of every month, except for December when it's the third Friday.

2026 Board

President: Susan Gutierrez

Recording Secretary: Leena Wang

Treasurer: Dan Williamson

Ways and Means: Dennis Olivas

Director at Large: Sylvia Darr

Director at Large: Ken Jacobsen

Director at Large: James Shao

Past President: Dennis Olivas

Do you have something you would like to include in the next newsletter?
Send an email to penorchidsoc@yahoo.com!

2026 Peninsula Orchid Society & Gold Coast Cymbidium Society Show Rules

Rules for Exhibitors

Please review the following carefully. All rules will be strictly enforced in the interest of this show and fairness to its participants.

Any person may enter orchid plants or orchid cut flowers in the show, subject to these rules. Exhibitors need not be POS (Peninsula Orchid Society) or GCCS (Gold Coast Cymbidium Society) members.

Perpetual trophies are awarded only to POS or GCCS members. Anyone may join POS or GCCS when they bring entries in if they wish.

Plants and flowers for exhibition at the show must be delivered to the Rose Room at the San Mateo Garden Center, 605 Parkside Way, San Mateo, CA between 3:00 pm and 6:45 PM on Friday, April 17.. **NO**

EXCEPTIONS.

The show concludes on Sunday at 4:00 PM and plants should be picked up between 4:00 PM and 4:30 PM. There will be no early plant removal.

Anyone interested in serving as a clerk for ribbon judging or as a ribbon judge should sign up on the volunteer signup page and be present at 7:00 PM on Friday April 17.

AOS Judging

Exhibitors who want their plants to receive AOS judging should complete specific forms, which are available at the entry table, and leave them with the show entry clerks.

This is an AOS-sanctioned show. By AOS rules, all plants exhibited will be considered for AOS awards, even if no judging form was completed, unless "No AOS Judging" is written on the entry card or display. If you feel that the plant entered has not reached its full potential on this blooming and want to have it judged later, you need the No AOS label on the entry card for it to remain eligible.

Plants not marked for "No AOS Judging" may not be AOS-judged later on the same inflorescence even though they have not been taken to the judging room. (Special rules apply for some Phalaenopsis and other varieties that bloom sequentially on the same inflorescence across bloom cycles.)

If you feel your plant may be AOS awardable, don't be shy, fill out an AOS entry form.

Plant Entry

- Entry cards must be completed for all plants entered in the show.
- Plants entered in ribbon and show trophy judging must have been owned by the exhibitor for at least 6 months (this is not true for AOS judging).
- For ribbon judging, you do not need to know the exact name of the plant as long as it is possible to determine which class it should be entered into.
- Plants must be free of disease and pests or they will be refused at the entry desk, and in the case of later discovery, removed from the show and placed in isolation.

- It is the responsibility of the owner to enter the plant in the correct division (Amateur or Open). Plants incorrectly labeled or improperly entered may be disqualified from consideration for awards.
- If there is any doubt at all about which class your entry belongs in, please discuss it with the clerk at the entry desk. Judges may (but are not required to) move entries to the appropriate class.
- All plants and items exhibited must remain on display throughout the show. Removal cannot begin until 4:00 PM on Sunday. Please contact Paul Asente before the show (asente@gmail.com) if this will cause a problem for you; we do value your entries.
- Plants may be entered for AOS judging without being entered in the show. You must bring the plant into the show room before 8 am on Saturday morning when AOS judging begins, and fill out the appropriate AOS entry form.
- Club members will provide security during the show. However, exhibitors assume all risk and liability for their property.

Divisions of Exhibitors by Skill Level

Amateur: An exhibitor who does not sell orchids commercially or does not have significant sales outside of orchid show member sales.

Open: Any one may enter this classification. Commercial growers, hobby growers with sales exceeding \$2,000 per year outside of orchid show member sales, and AOS judges are required to enter under this classification.

Class lists are on the following pages.

Schedule of Classes 2026

Sections are the main Alliances or groups of orchids, and are signified with a letter (A for Cattleya alliance, B for Cymbidium, etc.)

Classes are subdivisions within Sections, and are signified with a number, e.g., Class A1 for Cattleya species)

Experience Level Divisions of Exhibitor: Amateur and Open. A different colored entry card is used for each Division. (Please see the show rules to determine your level.)

Plants may be entered in only one class in sections A through J, with the exceptions of classes K1-K2 and L1-L2. A separate entry card must be filled out for each section entered. Any plant may be double-entered into Sections A-J and the special Sections K: First bloom seedlings and Section L: First Time Exhibitor.

Plants entered in the incorrect Class may be disqualified from judging or the judges may re-enter them correctly at their discretion. Questions should be directed to the clerks at the plant entry table or to the show chairperson.

A. Cattleya alliance

- A1. Cattleya species
- A2. Cattleya hybrids (Blc., Slc., Sc., Lc., Bc., Bl., Potinara, etc.)
- A3. Laelia species and hybrids (not included in Cattleya hybrids)
- A4. Brassavola species and hybrids
- A5. Other Cattleya species and hybrids (Anacheilium, Barkeria, Broughtonia, Dinema, Epidendrum, Encyclia, Oerstedella, Prosthechea, etc)

B. Cymbidium

Species

- B1. Species – *Any flower size*
- B2. Any species cut spikes

Standard Hybrids – *Flower size greater than 3.5" on the largest flower*

- B3. Standard hybrids, white and pastel shades
- B4. Standard hybrids, dark shades
- B5. Standard hybrids any other color or distinctive pattern
- B6. Any Standard Cymbidium cut spikes

Novelty Hybrids – *Flower size 1.75" to 3.5" on the largest flower*

- B7. Novelty hybrids, white and pastel shades
- B8. Novelty hybrids, dark shades
- B9. Novelty hybrids any other color or distinctive pattern
- B10. Any Novelty Cymbidium cut spikes

Miniature hybrids – *Flower Size less than 1.75" on the largest flower*

- B11. Miniature hybrids any color
- B12. Any Miniature hybrid cut spikes

C. Odontoglossum alliance (Oncidiinae)

- C1. Oncidium species and hybrids, plants 12" and under including inflorescence and flowers
- C2. Oncidium species and hybrids, plants over 12"
- C3. Miltoniopsis and Miltonia species and hybrids
- C4. Other hybrids, including intergeneric hybrids

D. Paphiopedilum alliance

- D1.** Species and hybrids, single flower per inflorescence
- D2.** Species and hybrids, multiple flowers per inflorescence
- D3.** Phragmipedium species and hybrids (includes Cypripediums and Mexipediums)

E. Vandaceous

- E1.** Vanda, Euanthe and Ascocentrum species and hybrids
- E2.** Phalaenopsis (including Doritis) species and hybrids flowers 3” or greater
- E3.** Phalaenopsis (including Doritis) species and hybrids, flowers under 3”
- E4.** Angraecoid species and hybrids
- E5.** Sarcochilus species and hybrids fewer than 20 flowers
- E6.** Sarcochilus species and hybrids 20 flowers or greater

F. Pleurothallid alliance

- F1.** Masdevallia species and hybrids under 6” (leaves)
- F2.** Masdevallia species and hybrids 6” and over (leaves)
- F3.** Dracula species and hybrids
- F4.** Other Pleurothallid species and hybrids (e.g., Dryadella, Stelis Lepanthes, Restrepia, Porroglossum) under 3” (leaves)
- F5.** Other Pleurothallid species and hybrids (e.g., Dryadella, Stelis Lepanthes, Restrepia, Porroglossum) 3” and over (leaves)

G. Dendrobium

- G1.** Section Oxyglossum (including cuthbertsonii) species and hybrids
- G2.** Section Dendrobium species and hybrids (e.g., nobile, parishii, loddigesii)
- G3.** Australian and Dockrillia species and hybrids (Australian e.g., kingianum, speciosum)

G4. Section Formosae (aka nigrohirsutae) species and hybrids

G5. Section Latourea (e.g., atrovioleaceum) species and hybrids

G6. Species and hybrids in other sections

H. Other

H1. Bulbophyllum (including Cirrhopetalum, and Haplochilus etc.) and Bulbophyllum relatives (Trias, Sunipea) species and hybrids

H2. Catasetinae species and hybrids

H3. Lycaste, Ida (Sudamerlycaste) and Anguloa species and hybrids

H4. Maxillaria, Bifrenaria, Rudolfiella, Xylobium, species and hybrids

H5. Zygopetalinae species and hybrids (with pseudobulbs, e.g., Zygopetalum, Promenaea, Pabstia, Galleotia etc.)

H6. Eriinae (Eria, Mediocarcar, Ceratostylis) species and hybrids

H7. Stanhopeinae (Stanhopea, Gongora, Houlettia, Coryanthes etc.) species and hybrids

H8. Coelogyne species and hybrids

H9. All other species and hybrids

H10. Terrestrials (including Disa, Phaius and Calanthe)

J. Orchids shown for foliage

J1. Jewel

J2. Variagated

J3. All others

K. First Bloom Seedling (may be double-entered)

K1. First Bloom Cymbidium seedling

K2. First Bloom any other genus

L. First Time Exhibitor (may be double-entered)

L1. Any Cymbidium entered by a first time exhibitor.

L2. Any other genus entered by a first time exhibitor.

Plant Awards-Ribbons & Rosettes

At the discretion of the judges, First, Second and Third Place ribbons will be awarded in all Classes for which there are entries. Judges may withhold ribbons if, in their opinion, no suitable material is exhibited or may award more than one entry in a class with the same level ribbon.

Plant Awards by Skill Level – Rosettes for Best of Section Level

Section A

Best Cattleya Alliance by Amateur Exhibitor
Best Cattleya Alliance by Open Exhibitor

Section B

Best Cymbidium by Amateur Exhibitor
Best Cymbidium by Open Exhibitor
Best Cymbidium by First Time Exhibitor

Section C

Best Odontoglossum Alliance by Amateur Exhibitor
Best Odontoglossum Alliance by Open Exhibitor

Section D

Best Paphiopedilum Alliance by Amateur Exhibitor
Best Paphiopedilum Alliance by Open Exhibitor

Section E

Best Vandaceous by Amateur Exhibitor
Best Vandaceous by Open Exhibitor

Section F

Best Pleurothallid Alliance by Amateur Exhibitor
Best Pleurothallid Alliance by Open Exhibitor

Section G

Best Dendrobium by Amateur Exhibitor
Best Dendrobium by Open Exhibitor

Section H

Best Plant of other Genus by Amateur Exhibitor
Best Plant of other Genus by Open Exhibitor

Rosettes for Each Section

Best Cattleya Alliance in Show
Best Cymbidium in Show
Best Odontoglossum Alliance in Show
Best Vandaceous Alliance in Show
Best Pleurothallid in Show
Best Dendrobium in Show
Best Plant of Other Genus in Show

POS Perpetual Trophies

(Only current POS and GCCS member's entries are eligible for these trophies.)

Barbara Todd Kennedy Trophy – Best Entry in Show

Katherine Jason Trophy – Best Species in Show

Peninsula Orchid Society Trophy – Best Orchid Grown by an Open Exhibitor

Anna Chai Trophy – Best Orchid Grown by an Amateur Exhibitor